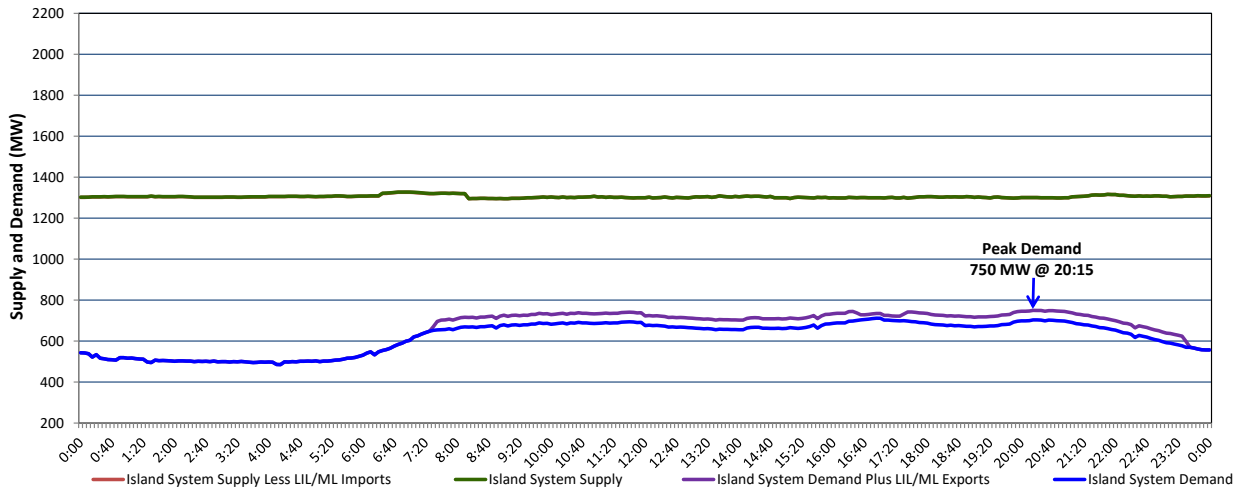


**Newfoundland Labrador Hydro (NLH)
Supply and Demand Status Report Filed Thursday, September 08, 2022**

**Section 1
Island Interconnected System Supply, Demand & Exports
Actual 24 Hour System Performance For Wednesday, September 07, 2022**



Supply Notes For September 07, 2022

1,2

- A As of 1327 hours, May 08, 2022, Bay d'Espoir Unit 6 unavailable due to planned outage (76.5 MW).
- B As of 0800 hours, June 08, 2022, Holyrood Unit 1 unavailable due to planned outage (170 MW).
- C As of 0800 hours, July 31, 2022, Holyrood Unit 2 unavailable due to planned outage 150 MW (170 MW).
- D As of 0651 hours, August 22, 2022, Hinds Lake Unit unavailable due to planned outage (75 MW).
- E As of 0803 hours, September 01, 2022, Holyrood Unit 3 available but not operating (150 MW).
- F At 0812 hours, September 07, 2022, Stephenville Gas Turbine unavailable due to planned outage 25 MW (50 MW).

**Section 2
Island Interconnected Supply and Demand**

| Thu, Sep 08, 2022 | Island System Outlook ³ | Seven-Day Forecast | Temperature (°C) | | Island System Daily Peak Demand (MW) | |
|--|------------------------------------|-------------------------------|------------------|---------|--------------------------------------|-----------------------|
| | | | Morning | Evening | Forecast | Adjusted ⁷ |
| Available Island System Supply: ⁵ | 1,255 MW | Thursday, September 8, 2022 | 11 | 11 | 820 | 820 |
| NLH Island Generation: ^{4,8} | 960 MW | Friday, September 9, 2022 | 12 | 13 | 750 | 750 |
| NLH Island Power Purchases: ⁶ | 90 MW | Saturday, September 10, 2022 | 13 | 12 | 725 | 725 |
| Other Island Generation: | 205 MW | Sunday, September 11, 2022 | 14 | 14 | 755 | 755 |
| ML/LIL Imports: | - MW | Monday, September 12, 2022 | 13 | 12 | 790 | 790 |
| Current St. John's Temperature & Windchill: | 11 °C | Tuesday, September 13, 2022 | 11 | 15 | 740 | 740 |
| 7-Day Island Peak Demand Forecast: | 820 MW | Wednesday, September 14, 2022 | 15 | 10 | 740 | 740 |

Supply Notes For September 08, 2022

3

- G At 0729 hours, September 08, 2022, Granite Canal Unit unavailable (40 MW).

- Notes:
- Generation outages for running and corrective maintenance are included. These are not unusual for power system operations. They generally do not impact customer supply. The power system operators schedule outages to system equipment whenever possible to coincide with periods when customer demands are low and sufficient supply reserves are available. However, from time to time equipment outages are necessary and reserves may be impacted.
 - Due to the Island system having no synchronous connections to the larger North American grid, when there is a sudden loss of large generating units there may be a requirement for some customer's load to be interrupted for short periods to bring generation output equal to customer demand. This automatic action of power system protection, referred to as under frequency load shedding (UFLS), is necessary to ensure the integrity and reliability of system equipment. Under frequency events have typically occurred 5 to 8 times per year on the Island Interconnected System and the resultant customer load interruptions are generally less than 30 minutes. With the activation of the Maritime Link frequency controller during the winter of 2018, UFLS events have occurred less frequently.
 - As of 0800 Hours.
 - Gross output including station service at Holyrood (24.5 MW) and improved NLH hydraulic output due to water levels (35 MW).
 - Gross output from all Island sources (including Note 4).
 - NLH Island Power Purchases include: CBPP Co-Gen, Nalcor Exploits, Rattle Brook, Star Lake, Wind Generation and capacity assistance (when applicable).
 - Adjusted for curtailable load, market activities and the impact of voltage reduction when applicable.
 - Due to limitations inherent in the design of combustion turbines, the output of combustion turbines may be reduced in the event that ambient temperatures exceed the threshold

**Section 3
Island Peak Demand Information
Previous Day Actual Peak and Current Day Forecast Peak**

| | | | |
|-------------------|--|-------|--------|
| Wed, Sep 07, 2022 | Actual Island Peak Demand ⁹ | 20:15 | 750 MW |
| Thu, Sep 08, 2022 | Forecast Island Peak Demand | | 820 MW |

- Notes: 9. Island Demand / LIL / ML Exports (where applicable) is supplied by NLH generation and purchases, plus generation owned and operated by Newfoundland Power and Corner Brook Pulp & Paper (Deer Lake Power, DLP).